



ONE BEDROOM PEARL SERVICED APARTMENTS



HASHOO
REAL ESTATE DIVISION







INTERIOR DESIGN OPTIONS



BEDROOM OPTION 1



BEDROOM OPTION 2



BATHROOM OPTION 1



BATHROOM OPTION 2



BATHROOM OPTION 3

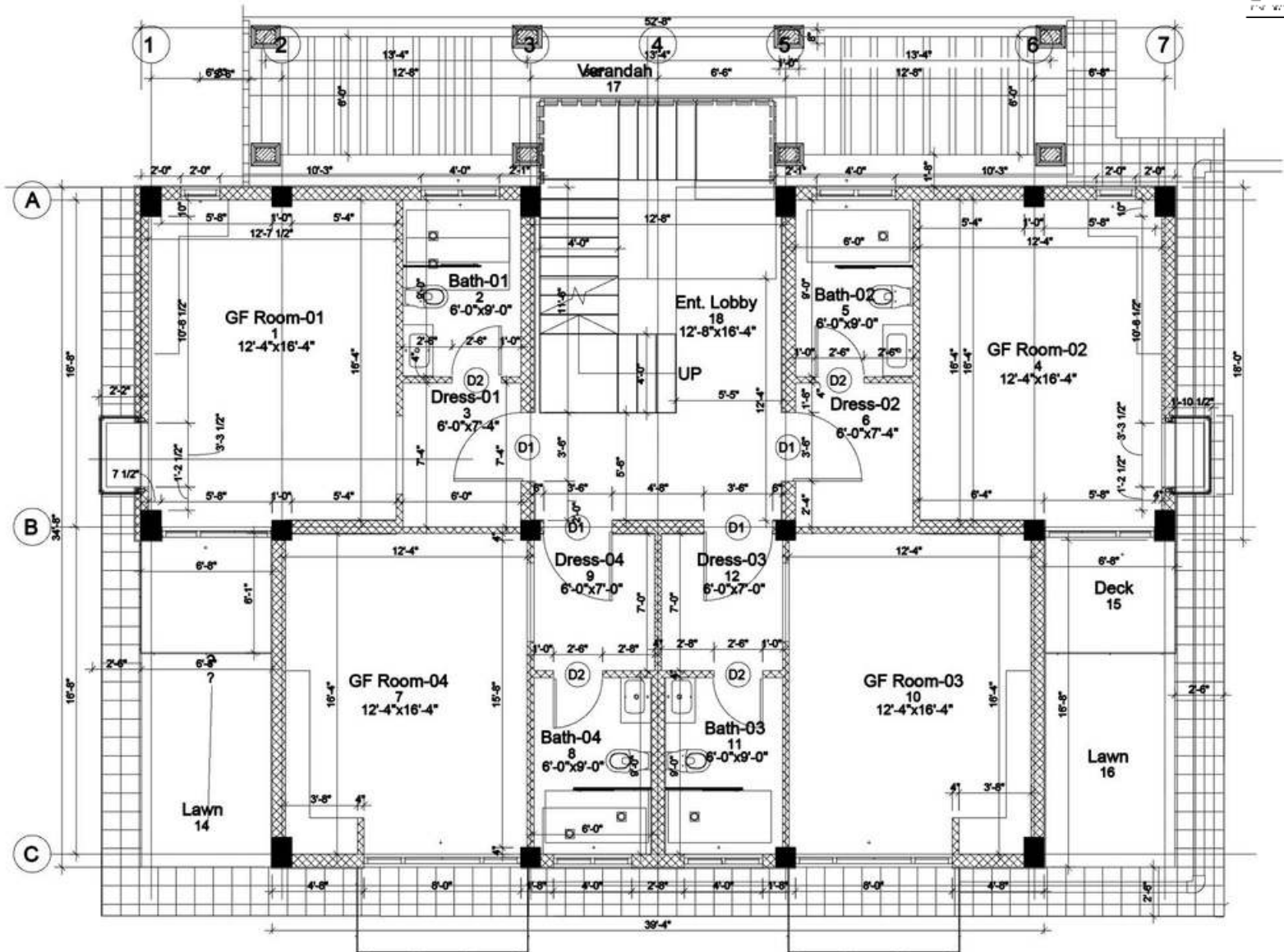




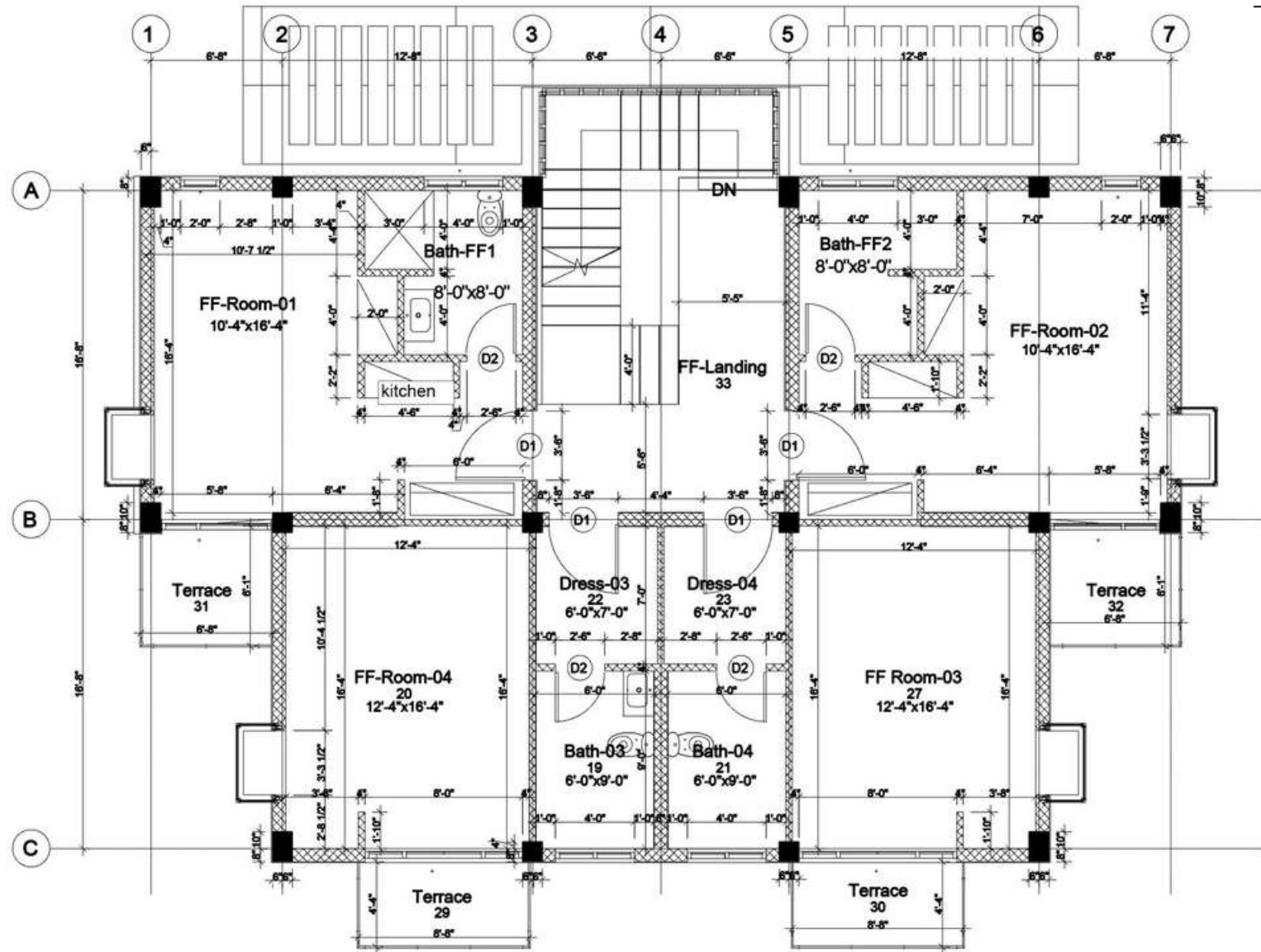
LOUNGE OPTION 1



LOUNGE OPTION 2



GROUND FLOOR PLAN



FIRST FLOOR PLAN

SPECIFICATIONS

ONE BEDROOM APARTMENT

- Filipino and Sri Lankan maids for children daycare.
- 24 hour luxury private concierge.
- 24 hour valet service catered to by our trusted chauffeurs.
- 24 hour room service (food and drinks) comprising of Continental, Italian, Lebanese, Chinese & Japanese Cuisine prepared by our executive chefs.
- 24 hour housekeeping (laundry, deep cleaning, washing, ironing, etc.) maintained by internationally trained professionals.
- 24 hour chauffeur driven golf cart service available for transportation across the entire resort.
- 24 hour security provided by trained and armed specialist commandos leveraging state of the art weaponry and technology for surveillance and security.
- The rental management services will be provided by PC.
- The rental management will be provided on the decided terms.

PAYMENT PLAN

EXCLUSIVELY PRICED AT PKR 15 MILLION

APARTMENT CATEGORY	TOTAL PRICE PKR	DOWN PAYMENT 30%	12 QUARTERLY EQUAL INSTALLMENTS 55%	PAYMENT ON POSSESSION 15%
One Bed	15,000,000	4,500,000	687,500	2,250,000

- Furnished Possession in 3 Years.
- Calculated at PKR 35,714 / square foot for the total furnished area size of 420 square feet.
- Payment should be made through P.O/D.D/ Cross Cheque in favor of Neelishang Hills (Pvt.) Limited.
- 8% discount will be given on lump-sum payment of total value i.e., 15,000,000.

FOR BOOKING AND DETAILS CONTACT:

Call \ WhatsApp: (+92) 310 8880981

info@neelishanghills.pk





05 MARLA / 800 Sq.ft Cov. Area
FULLY FURNISHED PEARL SIGNATURE VILLAS



HASHOO
REAL ESTATE DIVISION

VILLA OPTION -1



VILLA OPTION -2



VILLA OPTION -3



VILLA OPTION -4



VILLA OPTION -5





INTERIOR DESIGN OPTIONS



BEDROOM 1





BATHROOM OPTION 1



BATHROOM OPTION 2



BATHROOM OPTION 3



BATHROOM OPTION 4



BATHROOM OPTION 5







LOUNGE OPTION 1



LOUNGE OPTION 2



LOUNGE OPTION 3



LOUNGE OPTION 4



LOUNGE OPTION 5



LOUNGE OPTION 6



LOUNGE OPTION 7

SPECIFICATIONS

05 MARLA/800 Sq.ft Cov. Area

- Total Land Area = 1125 sq.ft
 - Covered Area = 800 sq.ft
 - 3 Bedrooms
 - 2 Washrooms
 - Lounge
 - Kitchen
 - Fully Furnished at PC Standards
 - Rental Income
 - Complimentary PC Privilege Card For Use Across Entire Pakistan
-
- Filipino and Sri Lankan maids for children daycare.
 - 24 hour luxury private concierge.
 - 24 hour valet service catered to by our trusted chauffeurs.
 - 24 hour room service (food and drinks) comprising of Continental, Italian, Lebanese, Chinese & Japanese Cuisine prepared by our executive chefs.
 - 24 hour housekeeping (laundry, deep cleaning, washing, ironing, etc.) maintained by internationally trained professionals.
 - 24 hour chauffeur driven golf cart service available for transportation across the entire resort.
 - 24 hour security provided by trained and armed specialist commandos leveraging state of the art weaponry and technology for surveillance and security.
 - The rental management services will be provided by PC.
 - The rental management will be provided on the decided terms.

PAYMENT PLAN

EXCLUSIVELY PRICED AT PKR 25,000,000

VILLA SIZE/ CATEGORY	TOTAL PRICE PKR	DOWN PAYMENT 30%	12 QUARTERLY EQUAL INSTALLMENTS 55%	PAYMENT ON POSSESSION 15%
05 Marla	25,000,000	7,500,000	1,145,833	3,750,000

- Furnished Possession in 3 Years.
- Calculated at PKR 22,222 / square foot.
- Payment should be made through P.O/D.D/ Cross Cheque in favor of Neelishang Hills (Pvt.) Limited.
- 8% discount will be given on lump-sum payment of total value i.e., 25,000,000.

FOR BOOKING AND DETAILS CONTACT:

Call \ WhatsApp: (+92) 310 8880981

info@neelishanghills.pk



HASHOO
REAL ESTATE DIVISION



10 MARLA / 1200 Sq.ft Cov. Area
FULLY FURNISHED PEARL SIGNATURE VILLAS



HASHOO
REAL ESTATE DIVISION

VILLA OPTION -1



VILLA OPTION -2



VILLA OPTION -3



VILLA OPTION -4



VILLA OPTION -5





INTERIOR DESIGN OPTIONS



BEDROOM 1





BATHROOM OPTION 1



BATHROOM OPTION 2



BATHROOM OPTION 3



BATHROOM OPTION 4



BATHROOM OPTION 5







LOUNGE OPTION 1



LOUNGE OPTION 2



LOUNGE OPTION 3



LOUNGE OPTION 4



LOUNGE OPTION 5



LOUNGE OPTION 6



LOUNGE OPTION 7

SPECIFICATIONS

10 MARLA/1200 Sq.ft Cov. Area

- Total Land Area = 2250 sq.ft
 - Covered Area = 1200 sq.ft
 - 4 Bedrooms
 - 3 Washrooms
 - Lounge
 - Kitchen
 - Fully Furnished at PC Standards
 - Rental Income
 - Complimentary PC Privilege Card For Use Across Entire Pakistan
-
- Filipino and Sri Lankan maids for children daycare.
 - 24 hour luxury private concierge.
 - 24 hour valet service catered to by our trusted chauffeurs.
 - 24 hour room service (food and drinks) comprising of Continental, Italian, Lebanese, Chinese & Japanese Cuisine prepared by our executive chefs.
 - 24 hour housekeeping (laundry, deep cleaning, washing, ironing, etc.) maintained by internationally trained professionals.
 - 24 hour chauffeur driven golf cart service available for transportation across the entire resort.
 - 24 hour security provided by trained and armed specialist commandos leveraging state of the art weaponry and technology for surveillance and security.
 - The rental management services will be provided by PC.
 - The rental management will be provided on the decided terms.

PAYMENT PLAN

EXCLUSIVELY PRICED AT PKR 45,000,000

VILLA SIZE/ CATEGORY	TOTAL PRICE PKR	DOWN PAYMENT 30%	12 QUARTERLY EQUAL INSTALLMENTS 55%	PAYMENT ON POSSESSION 15%
10 Marla	45,000,000	13,500,000	2,062,500	6,750,000

- Furnished Possession in 3 Years.
- Calculated at PKR 22,222 / square foot.
- Payment should be made through P.O/D.D/ Cross Cheque in favor of Neelishang Hills (Pvt.) Limited.
- 8% discount will be given on lump-sum payment of total value i.e., 25,000,000.

FOR BOOKING AND DETAILS CONTACT:

Call \ WhatsApp: (+92) 310 8880981

info@neelishanghills.pk

